

The Art of the University of Washington

Adam Knott, Bobby Miller, Chris Gillette

The Art of The University of
Washington

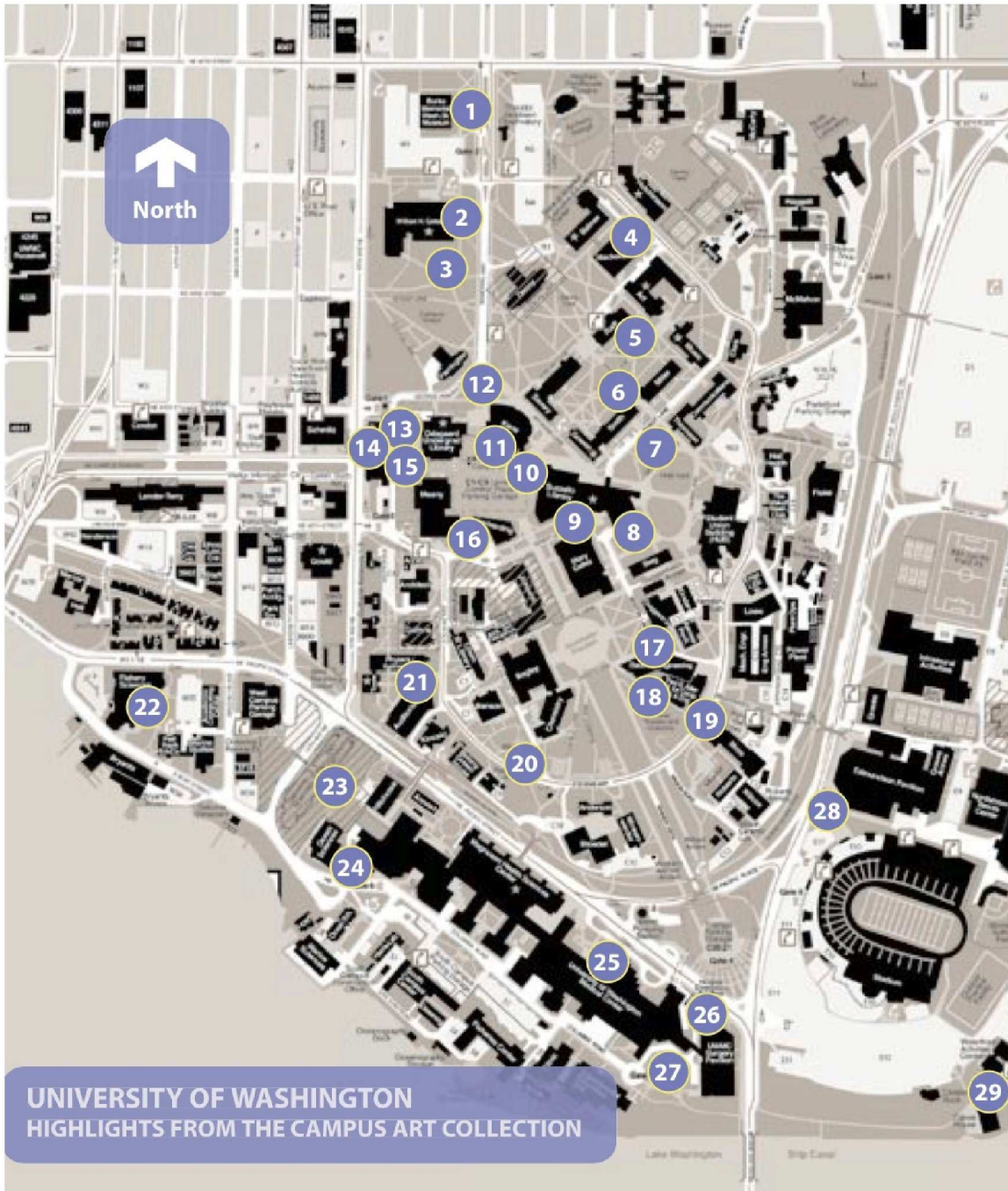
Adam Knott
Bobby Miller
Chris Gillette

Problem statement

While walking around the University of Washington Campus we noticed that there were some art pieces scattered here and there. It led us to think, are there more? Who created these pieces, and why don't we know more about them? A quick jaunt around campus revealed a few more sculptures and art pieces, however, it was only the tip of the iceberg. We spent hours trekking across campus searching for different pieces of art, and we still haven't found all of them. People don't realize how much art is scattered around the university campus. Some of the best works are hidden away in strange and labyrinthian parts of the campus, only to be discovered by accident. Since the University of Washington pays for all of its art, we felt like students needed to know about them since the art pieces are basically funded by the student body.

Plus, some of the public pieces are truly visionary, bringing impressive artistry to life. More eyes need to see these works. The reason that people do not know about these pieces of incredible art around campus is because the University does little to make people know they are there. There is a low resolution map that provides pixelated pictures of some art pieces and their location on campus, however, the map is hidden within the University Website, and is not easily accessible. A better compilation of these works needs to be created so that more people can see and experience the lesser known pieces of art at the University of Washington.

.

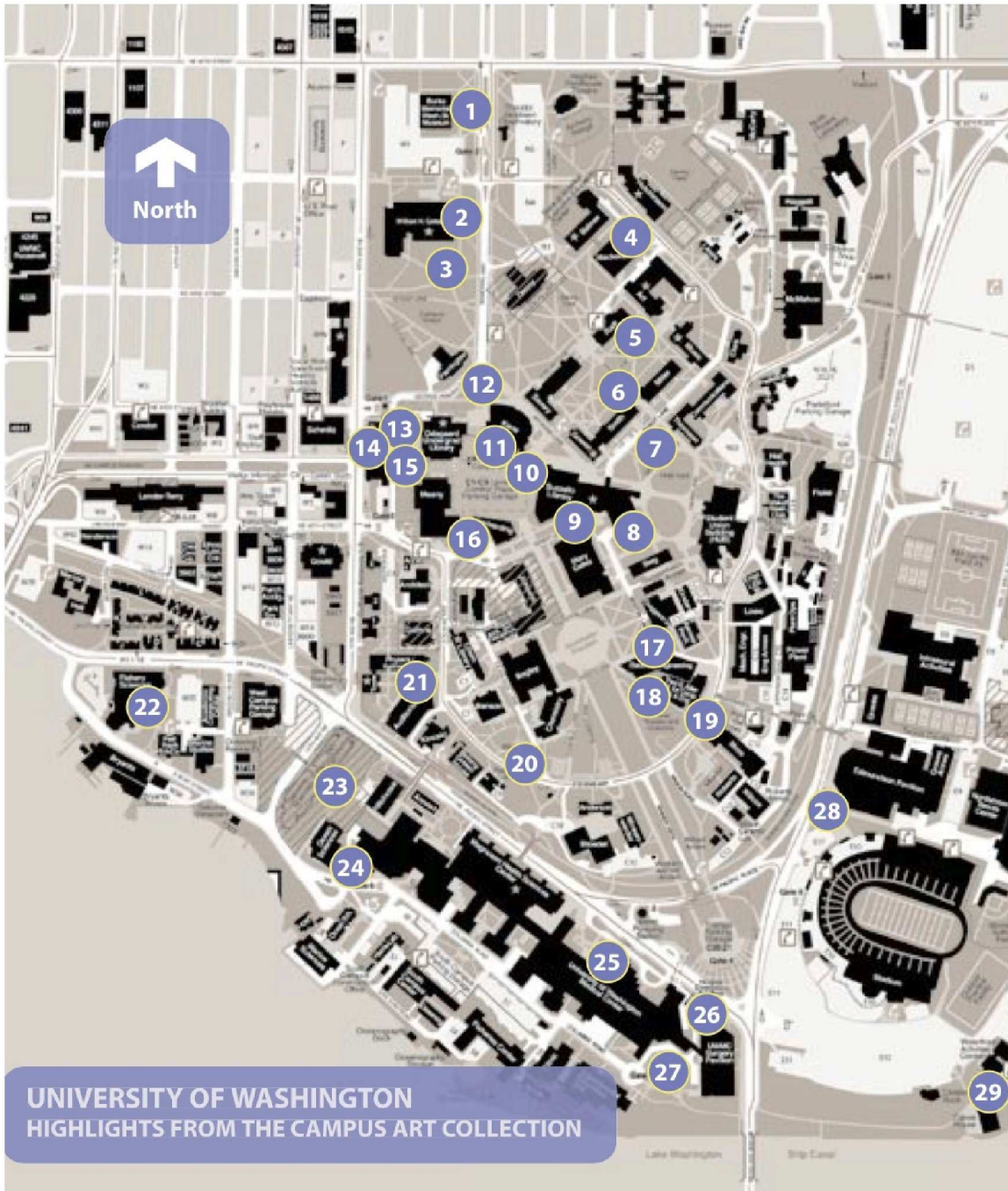


- 1 Mark Calderon, *Pluma*, 1999
- 2 Gallagher Law Library Collection (contemporary Native American artwork, various artists)
- 3 Cris Bruch, *Dept. of Forensic Morphology Annex*, 2002
- 4 George Tsutakawa, *Fountain of Reflection*, 1962
- 5 Alonzo Victor Lewis, *Raitt Hall grotesques*, 1920
- 6 Dudley Pratt, *Smith Hall grotesques*, 1939
- 7 Finn Frolich, *Edvard Grieg*, 1909
- 8 Carl Chew, Mare Blocker, JT Stewart, Ron Hilbert Coy, *Raven Brings Light to This House of Stories*, 1993
- 9 Student Project, *Blocked Out*, 2005
- 10 Barnett Newman, *Broken Obelisk*, 1967
- 11 Kane Hall Collection (various artists) and Pablo O'Higgins, *Shipscalers' Mural*, 1945
- 12 Jon Gierlich, *Interrupted Journey* (WWII Memorial), 1998
- 13 Robert Irwin, *Nine Spaces Nine Trees*, 1982 (recreated 2007)
- 14 James Turrell, *Light Reign* (in Henry Art Gallery), 2003
- 15 Loreda Taft, *George Washington*, 1909
- 16 Joseph McDonnell, *Breaking Away* (on staircase), 2000 and Peter Reiquam, *A Shadow Garden* (sunken courtyards), 1998
- 17 Jackie Winsor, *Winsor Ceiling* (in rotunda), 1998
- 18 Erwin Redl, *Nocturnal Flow* (in Allen Center atrium), 2006
- 19 Finn Frolich, *James J Hill*, 1909
- 20 Suzanne Hellmuth and Jock Reynolds, *Brockman Tree Tour and Medicinal Herb Garden Bus Shelters*, 1993
- 21 Martin Puryear, *Everything That Rises*, 1994
- 22 Alexis Rockman, *A Recent History of The World* (in lobby),
- 23 Brian Tolle, *Stump*, (in development, anticipated 2007)
- 24 Robert Maki, *Cut*, 1977
- 25 Dudley Pratt and Jean Johanson, *Spirit of Medicine*, 1947
- 26 Jun Kaneko, *Metamorphosis*, 2003
- 27 Mary Miss, *untitled installation*, 1990
- 28 Georgia Gerber, *Husky Spirit*, 1998
- 29 Christy Rupp, *Rollback Bench*, 1992

UNIVERSITY OF WASHINGTON
HIGHLIGHTS FROM THE CAMPUS ART COLLECTION

Solution Statement

In order to solve the problem, we first decided to use the current campus art map as a reference point. The map contained 29 locations of different important pieces of art on campus so we agreed upon doing at least those pieces for our project. In order to create a tangible object where people could interact, find, and learn about the artwork, we needed to research each work of art around campus and write a paragraph about each one to provide the reader with a better understanding of each artwork. In addition to the description of each piece we will provide "streetview" type photographs taken by us to show the reader exactly what they will be looking at when they walk about the University of Washington campus. Our goal is to make it easier for college students and visitors to appreciate the artwork that our university installs.



- 1 Mark Calderon, *Pluma*, 1999
- 2 Gallagher Law Library Collection (contemporary Native American artwork, various artists)
- 3 Cris Bruch, *Dept. of Forensic Morphology Annex*, 2002
- 4 George Tsutakawa, *Fountain of Reflection*, 1962
- 5 Alonzo Victor Lewis, *Raitt Hall grotesques*, 1920
- 6 Dudley Pratt, *Smith Hall grotesques*, 1939
- 7 Finn Frolich, *Edvard Grieg*, 1909
- 8 Carl Chew, Mare Blocker, JT Stewart, Ron Hilbert Coy, *Raven Brings Light to This House of Stories*, 1993
- 9 Student Project, *Blocked Out*, 2005
- 10 Barnett Newman, *Broken Obelisk*, 1967
- 11 Kane Hall Collection (various artists) and Pablo O'Higgins, *Shipscalers' Mural*, 1945
- 12 Jon Gierlich, *Interrupted Journey* (WWII Memorial), 1998
- 13 Robert Irwin, *Nine Spaces Nine Trees*, 1982 (recreated 2007)
- 14 James Turrell, *Light Reign* (in Henry Art Gallery), 2003
- 15 Loreda Taft, *George Washington*, 1909
- 16 Joseph McDonnell, *Breaking Away* (on staircase), 2000 and Peter Reiquam, *A Shadow Garden* (sunken courtyards), 1998
- 17 Jackie Winsor, *Winsor Ceiling* (in rotunda), 1998
- 18 Erwin Redl, *Nocturnal Flow* (in Allen Center atrium), 2006
- 19 Finn Frolich, *James J Hill*, 1909
- 20 Suzanne Hellmuth and Jock Reynolds, *Brockman Tree Tour and Medicinal Herb Garden Bus Shelters*, 1993
- 21 Martin Puryear, *Everything That Rises*, 1994
- 22 Alexis Rockman, *A Recent History of The World* (in lobby),
- 23 Brian Tolle, *Stump*, (in development, anticipated 2007)
- 24 Robert Maki, *Cut*, 1977
- 25 Dudley Pratt and Jean Johanson, *Spirit of Medicine*, 1947
- 26 Jun Kaneko, *Metamorphosis*, 2003
- 27 Mary Miss, *untitled installation*, 1990
- 28 Georgia Gerber, *Husky Spirit*, 1998
- 29 Christy Rupp, *Rollback Bench*, 1992

UNIVERSITY OF WASHINGTON
HIGHLIGHTS FROM THE CAMPUS ART COLLECTION

Pluma
By Mark Calderon
1999
#1

Pluma (1999), by Mark Calderon is a sculpture found in front of the Burke Museum of Natural History and Culture. This seven-by-ten foot undulating leaf weighs more than half a ton and is most likely the first piece of art you will see upon entering the UW campus. Pluma symbolizes the spirit of the Burke Museum by combining the fields of culture, art and nature in a unique way.



Gallagher Law Library Collection
Artwork by contemporary Native American Artists
#2

The Gallagher Law Library features a collection of Native American art that honors the UW School of Law's longstanding commitment to the Native American community. John Feodorov, a local artist and member of the Navajo Nation, was in charge of putting together the collection. Artwork in the collection reflects themes such as land rights, racism, identity and religious freedom. Feodorov chose pieces that would bring opportunities for discussion and insight into the Native American/United States relationship.



Department of Forensic Morphology Annex
Cris Bruch
2002
#3

Department of Forensic Morphology Annex (2002) is a sculpture by Cris Bruch. The sculpture takes its inspiration from two iconic UW facilities: the Theodore Jacobsen Observatory and the F.K. Kirsten Wind Tunnel Building. Placed on the Parrington lawn, the sculpture has a streamlined form covering a viewable intricate latticework of shadow, light and steel. Bruch says the sculpture is hidden in plain view and is something to be discovered.



Fountain of Reflection
George Tsutakawa
1962
#4

The "Fountain of Reflection" was created by George Tsutakawa in 1964. You can find this fountain on the north part of campus in Mackenzie Hall. Tsutakawa attended the University of Washington and was a faculty member of the UW School of Art between 1947 and 1976. Tsutakawa is known for working with bronze and making Sumi-e paintings.



Raitt Hall Grotesques
Alonzo Victor Lewis
1920
#5

If you look at the top of Raitt Hall you will notice many grotesques. These were completed in 1920 by Alonzo Victor Lewis in 1920. Lewis also completed 44 grotesques on Miller Hall in 1922. The grotesques depict the classes that were held in the building when the grotesques were made.



Smith Hall Grotesques
Dudley Pratt
1939
#6

Similarly to all buildings in the quad, Smith Hall also has grotesques all around it. These grotesques were done in 1939 by Dudley Pratt. Note the difference of style in grotesques between Smith Hall and Raitt Hall.



Edvard Grieg
Finn Frolich
1909
#7

This is a sculpture of Edvard Grieg the Norwegian composer. The work was completed in 1909 by Finn Frolich who also completed work #19. The piece lies in the Grieg Garden behind Smith Hall. This piece is great to view at night.



EDVARD GRIEG
NORWEGIAN COMPOSER
BERGEN 1843 - 1907

Raven Brings Light to This House of Stories
Carl Chew, Mare Blocker, JT Stewart, Ron Hilbert Coy
1993
#8

In a certain part of Allen Library you will see a ton of ravens flying through the sky. This is a work called, "Raven Brings Light to This House of Stories" created by Carl Chew, Mare Blocker, JT Stewart, and Ron Hilbert Coy in 1993. The art is a "contemporary retelling of a Native American, Pacific Northwest Coast Story. The money for this work was provided by the Washington State Arts commission.



Blocked Out
Student Project
2005
#9

This is a student project called "Blocked Out." This work was created in 2005 by the Public Art Program Design/Build Class. It is located outside of Mary Gates Hall.



Broken Obelisk
Barnett Newman
1967
#10

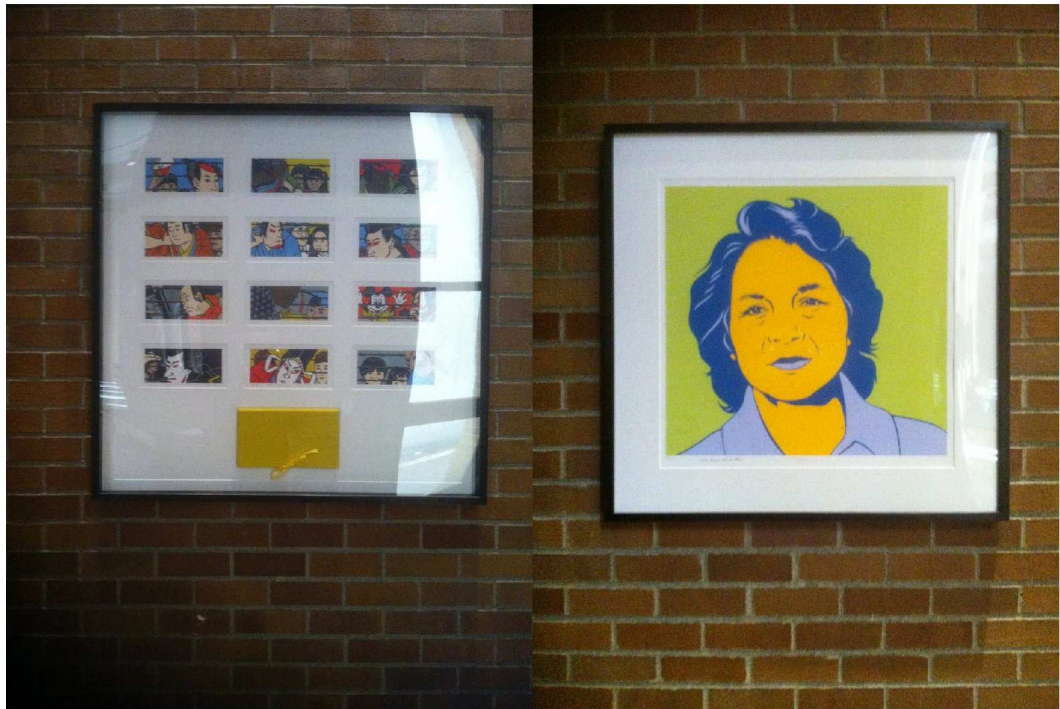
Broken Obelisk (1967) is a three ton steel sculpture by artist Barnett Newman. Sitting in northeast part of Red Square on UW campus, this sculpture is one of four originals made by Newman. What makes Broken Obelisk special is that each one was cast, not molded. The sculpture represents a monument to life and renewal balanced on top of a pyramid of ascent of the human spirit.



UWAMA PRESENT
The Charlotte Project
Charlotte, North Carolina

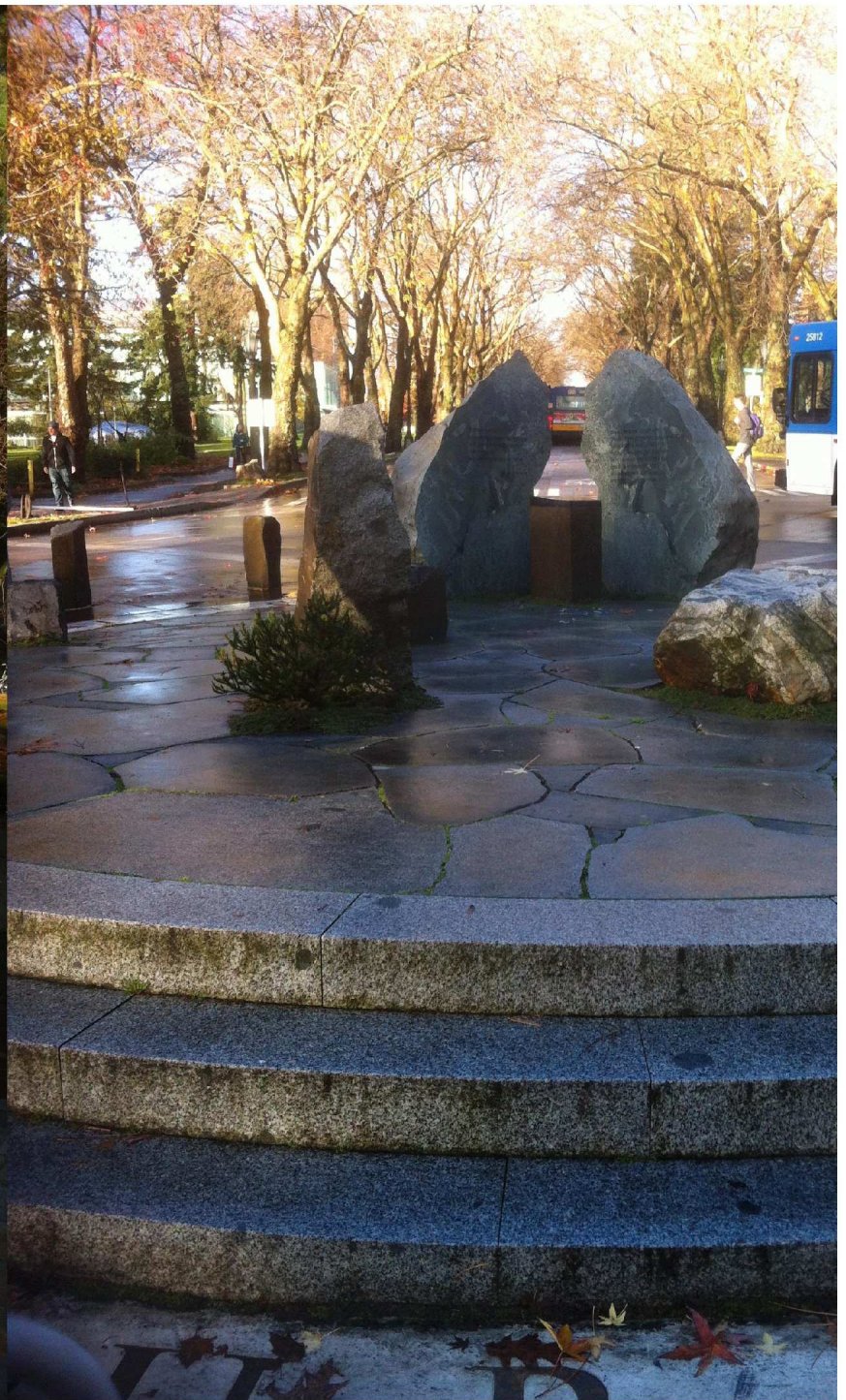
Kane Hall Collection
Various Artists
#11

The Kane Hall Collection is a collection of paintings and artwork that celebrate diversity. Assembled by a group of UW students with the help of the Public Art Commission, the collection features artworks by nine of the most significant and esteemed artists of color in the country. With the theme of identity, the collection includes artworks by Barbara Carrasco, Rupert Garcia, Glenn Ligon, Hung Liu, James Luna, Roger Shimomura, Hulleah Tsinhnahjinnie, Carrie Mae Weems and Gu Xiong.



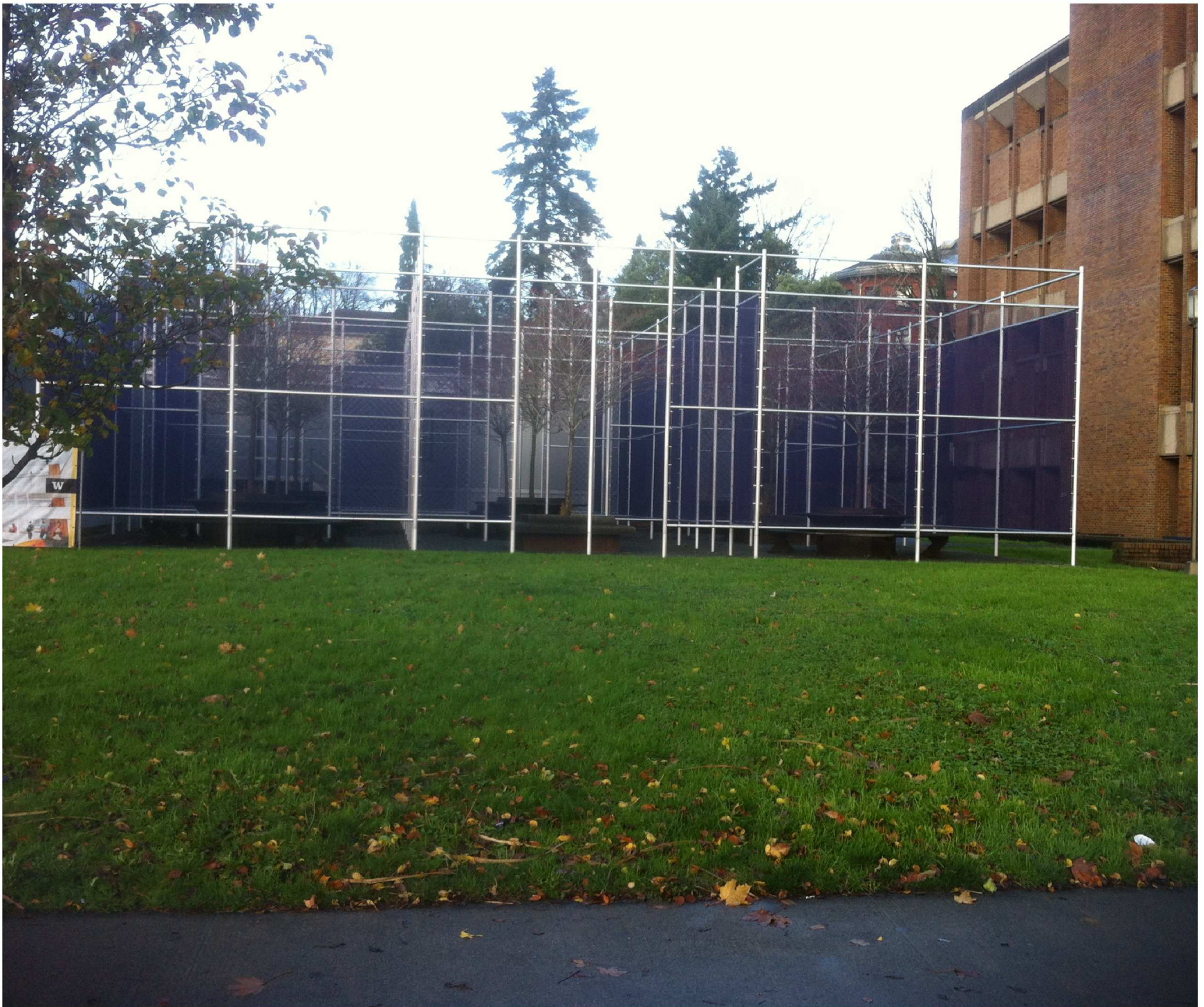
Interrupted Journey
Jon Gierlich
1998
#12

Interrupted Journey (1998) by Jon Gierlich is a WWII memorial centered around the flagpole at the end of Memorial Way on the UW campus. Engraved around the base of the flag pole are the names of 585 University of Washington students, alumni and faculty that lost their lives fighting in WWII. Placed at the formal entrance to the UW campus, this memorial is a reminder of those who have walked before us and gave their lives protecting this country.



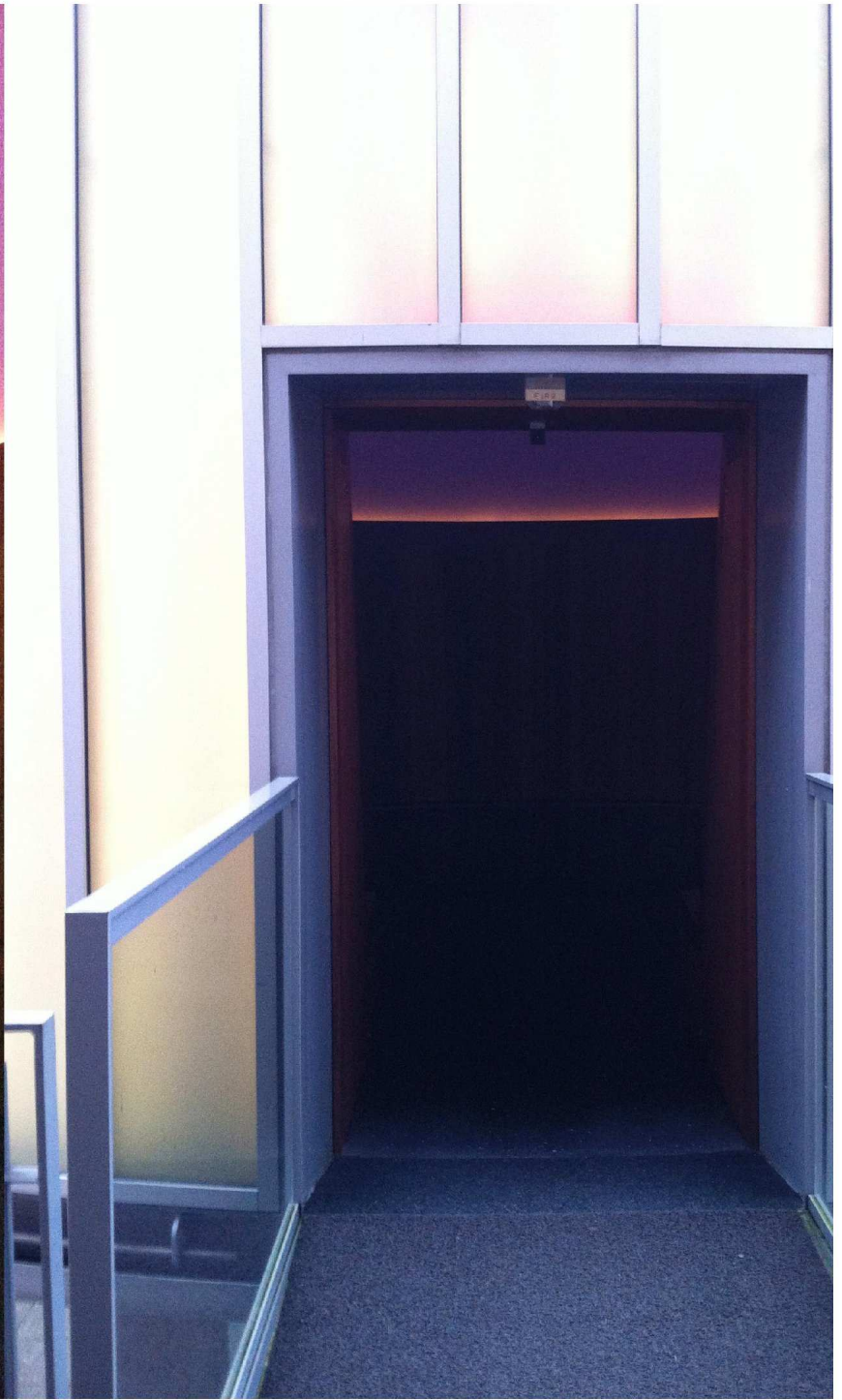
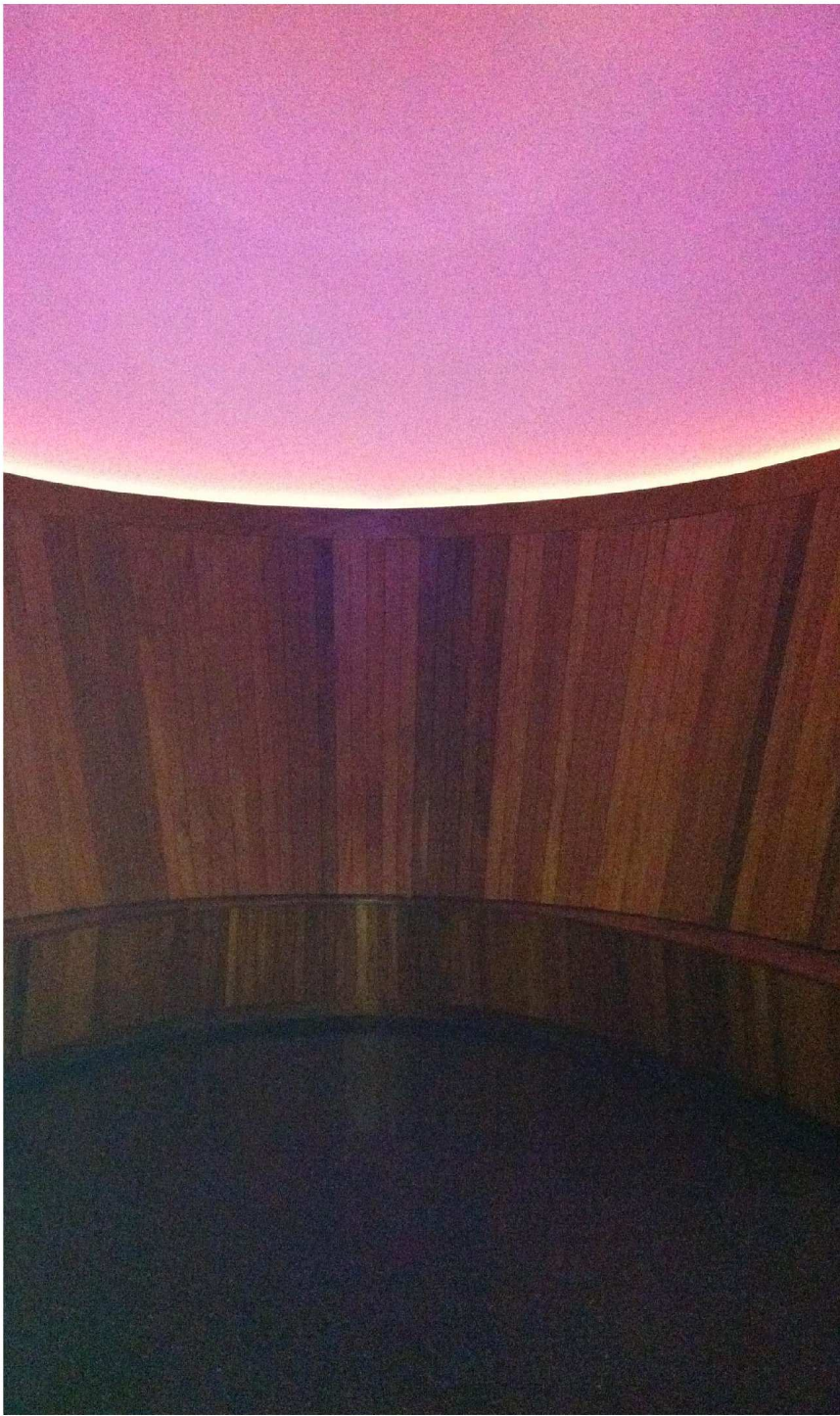
Nine Spaces Nine Trees
Robert Irwin
1982
#13

Nine Spaces Nine Trees (1982, recreated 2007) by Robert Irwin is a conceptualized art space that was originally on top of the Public Safety Building. When the building was torn down, the artwork was moved to a space adjacent to the Henry Art Museum on the UW campus, costing \$300,000. The artwork is a square fenced yard with nine trees evenly spaced out with circular benches with tables around five of them. Some call it "a jail for trees" because the fencing is chain-link of the un-climbable variety.



Light Reign
James Turrell
2003
#14

Light Reign (2003) by James Turrell is a Skyspace artwork located in the Henry Art Museum on the UW campus. The Skyspace combines architecture, sculpture and atmosphere to create a meditative ambiance that the viewer can be inside of. Once inside the Skyspace, the viewer takes in the ambiance slowly and quietly. With the change of the seasons, the Skyspace also changes, so viewers are encouraged to come back and view at different times of the year. At night, Light Reign is lit up externally by thousands of computer controlled LED lights and is a sight to see.



George Washington
Lorado Taft
1909
#15

George Washington (1909) by Lorado Taft is giant statue of the first president of the United States: George Washington. The tremendous tribute stands tall to greet visitors at the west entrance to Red Square. Costing \$14,000, the statue was dedicated during the exposition on Flag Day, June 14th, 1909. Cast out of bronze, the statue represents the honor and loyalty to our state and country that resides within the heart of the UW.



Breaking Away
Joseph McDonnell
2000
#16

Breaking Away (2000) by Joseph McDonnell is a 14 foot bronze sculpture on the staircases between Meany and Gerberding Halls. The sculpture is made of cast rectangular prisms overlapping and intertwining with one another. In the center is a circular bowl, perhaps representing the title "breaking away". The statue serves to remind students to break away from the crowd and follow their own path.



Winsor Ceiling
Jackie Winsor
1998
#17

This is "Winsor Ceiling" by Jackie Winsor. It is located outside of the Electrical Engineering building. This is a rotunda ceiling sculpture that pays respect to domed ceilings of the past that are actually nearly flat. The blue color that released by the center is very unique.



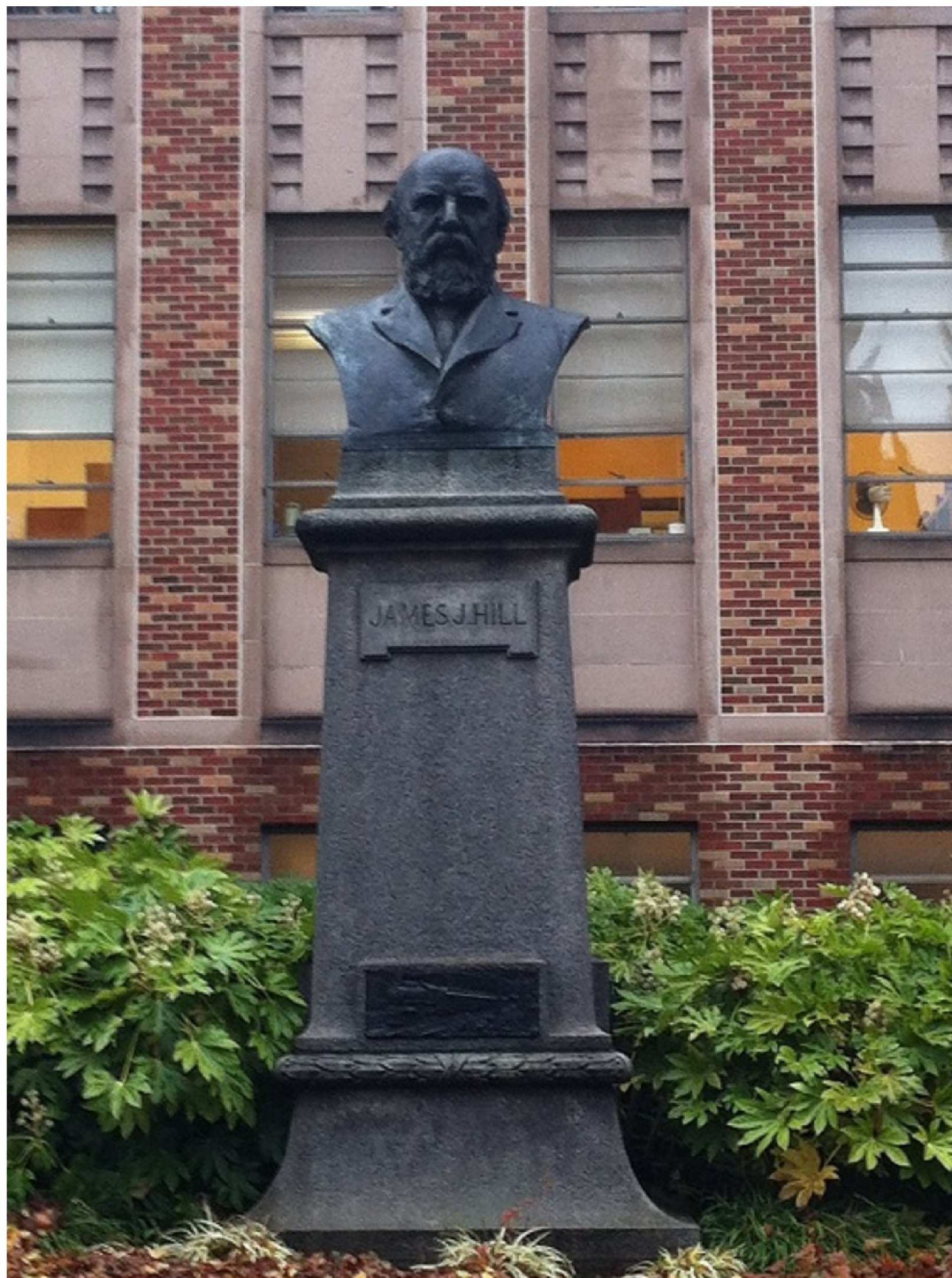
Nocturnal Flow
Erwin Redl
2006
#18

"Nocturnal Flow" was created by Erwin Redl in 2006 and is located in the Paul G. Allen Center for Computer Science and Engineering. It is a work of art that was created with LED lights. Redl wrote, "Nocturnal Flow emphasizes the vertical dimension of the building's atrium. The interior brick wall is the only architectural element reaching from the floor to the ceiling. The installation uses this wall to create an enormous plane of light that conceptually links the different floors of the building."



James J Hill
Finn Frolich
1909
#19

This bronze bust of James J Hill, the railroad tycoon, was created by Finn Frolich, who also completed #7. It was unveiled August 3 1909, and is located outside of More Hall. Hill had to pose for ten days for Frolich to get everything he needed to create the bust. The bust stands 22 feet tall.



Brockman Tree Tour and Medicinal Herb Garden
Suzanne Hellmuth and Jock Reynolds
1993
#20

Brockman Tree Tour and Medicinal Herb Garden Bus Shelters were created by Suzanne Hellmuth and Jock Reynolds to be inviting. The bus shelters were designed to serve as a formal gateway to two collections of plants-the Medicinal Herb Garden and the campus collection of tree specimens. The artists wanted to make a place where people really wanted to be, so the bus shelters were a natural fit. The shelters can be found on Stevens Way near Anderson Hall.



Everything That Rises
Martin Puryear
1994
#21

Everything that Rises by Martin Puryear is one of the University of Washington's public art pieces that did not receive unanimous praise- at least at first. When the sculpture was installed outside the Physics and Astronomy building, some likened it to a massive bowling pin or peanut. Kurt Kiefer, University of Washington campus art administrator, discussed people's reactions, "The thing that seems to disturb people the most is simplicity," says Kiefer. "A lot of people, when they see something simple, think that the artist is trying to pull the wool over their eyes. In fact, some artists choose to make things simple for a reason. They want to create something that makes people slow down. If an artwork makes people stop for a minute, then it's done its job."



Fishes of the Salish Sea
Ray Troll
2011
#22

Fishes of the Salish Sea by Ray Troll depicts 99 species of fish of the Salish Sea. The acrylic painting can be found in the Fisheries Sciences building. The artist took advantage of the fact that cool colors tend to recede in the painting and warm colors tend to emerge so the warm colored fish, with the right 3D glasses, pop out towards the viewer, giving the painting depth. Also, if one looks closely they will notice in the painting that there are multiple oddities such as a number two pencil, a pizza next to the anchovy, and a submarine periscope.



Stump
Brian Tolle
2007
#23

Stronghold is a sculpture by Brian Tolle that is 26 feet in diameter at the base and 22 feet high. It is an effigy of a massive old-growth tree, like the ones that may have been on the university's campus before logging. Painstakingly built from two by six cedar lumber, the sculpture seems like a low-resolution digital image- very realistic from a distance and obviously constructed up close. According to Tolle, the project was inspired by the history of the region, particularly by old photos that documented the logging of old growth forests featuring possibly the largest piece of lumber ever made. It was developed by the Washington State Arts Commission's Art in Public Places program in collaboration with the UW Public Art Commission.



Cut
Robert Maki
1997
#24

Cut by Robert Maki is a steel sculpture in memory of Rod Clarke. It was commissioned by the Washington State Arts Commission and the Art in Public Places Program in collaboration with the University of Washington. The Corten steel sculpture can be found at the University of Washington at Northeast Northlake Street & Brooklyn Avenue Northeast.



Spirit of Medicine
Dudley Pratt and Jean Johanson
1947
#25

The Spirit of Medicine by Dudley Pratt and Jean Johnson is made carved limestone and is likely allegorical. The public sculpture is a large bas-relief that depicts six figures portraying various health care disciplines. Among them are nursing, pharmacy, and medicine. The sculpture can be found at the University of Washington's Magnuson Health Sciences Center.



D. PRATT Sc
AD. 1947

Metamorphosis
Jun Kaneko
2003
#26

Metamorphosis by Jun Kaneko, who hails from Nagoya, Japan, be found in front of the University of Washington Surgery Pavilion. The public work of art is a series of colorful, capsule-shaped sculptures in front of the building. Kaneko created the sculptures, called dangos, to compliment the architecture of the pavilion. The vertical illusion of rain and trees in Washington fascinated Kaneko, so he decided to represent that through the sculptures in an abstract fashion.



Untitled Installation
Mary Miss
1990
#27

The untitled installation by Mary Miss was constructed between 1986 and 1990. Miss created a sequence of wavelike forms from wood, steel, and concrete in a glade in order to make the public art piece. The piece sits within sight of Mount Rainier, is nestled in a natural bowl between an assemblage of pine trees, and is overlooked by two seven-story hospital wings of the University Washington Medical Center, in Seattle. The human scale, gentle enclosure, rustic wooden material, easy utility, and low horizontal elements of the project form a public place of great accessibility, comfort and intimacy.



Husky Spirit
Georgia Gerber
1998
#28

This is "Husky Spirit." It is located outside of Husky Stadium. The sculpture was created in 1998 by Georgia Gerber. "Husky Spirit" is "To honor UW Athletes past, present and future."



Rollback Bench
Christy Rupp
1992
#29

Rollback Bench by Christy Rupp is made of concrete, steel, plantings, and was by the State of Washington Art in Public Places, for the University of Washington. The bench was created to celebrate 20 years of endangered species legislation. The art piece is in the form of a dam, located in a simulated dried out stream bed, with two life size stainless steel salmon menacing those who would sit in the bench. The sculpture seeks to link legal rulings like Roe Versus Wade and The Endangered Species Act. Both were passed in 1973 as acts intended to preserve a spectrum of options for women as well as biodiversity. Decades later both of these pieces of legislation were under fire- hence the name "Roll Back".



Bibliography

- 1) "Pluma Greets Burke Museum Visitors". UW Arts and Sciences. 2000. Web. 3 Dec. 2012. <http://www.artsci.washington.edu/newsletter/Winter00/news.html>
- 2) Kiefer, Kurt. "Contemporary Native American Art in the Gallagher Law Library". Gallagher Law Library. Web. 3 Dec. 2012. <http://lib.law.washington.edu/services/artwalk.html>
- 3) Bruch, Cris. "Department of Forensic Morphology Annex". Crisbruch.com. 2009. Web. 3 Dec. 2012. http://www.crisbruch.com/public_commissions/public_commissions_06.html
- 4) <http://www.washington.edu/research/showcase/1947a.html>
- 5) <http://digital.lib.washington.edu/findingaids/view?docId=MillerHallGargoylesPHColl612.xml>
- 10) "Abstract: Broken Obelisk - Barnett Newman". Nassau Museum of Art. Web. 3 Dec. 2012. http://www.nassaumuseum.com/outdoor/outdoorsculpture_abstract_newman.htm
- 11) Roseth, Bob. "UW to dedicate collection of art by artists of color". University of Washington. 5 Apr. 2005. Web. 3 Dec. 2012. <http://www.washington.edu/news/2005/04/05/uw-to-dedicate-collection-of-art-by-artists-of-color/>

12) "Honoring those who served".
University of Washington. 2012. Web. 3
Dec. 2012. [http://www.washington.edu/
discover/visit/valor/](http://www.washington.edu/discover/visit/valor/)

13) Graves, Jen. "An Artwork by Robert
Irwin is Born Again". The Stranger. 20 June
2007. Web. 3 Dec. 2012. [http://
www.thestranger.com/seattle/Content?
oid=247540](http://www.thestranger.com/seattle/Content?oid=247540)

14) "Light Reign, James Turrell Skyspace".
Henry Art Gallery. 2012. Web. 3 Dec. 2012.
[http://www.henryart.org/exhibitions/
show/14](http://www.henryart.org/exhibitions/show/14)

15) "George Washington Statue". UW
Content Library. Web. 3 Dec. 2012. [http://
content.lib.washington.edu/exhibits/atype/
statue.html](http://content.lib.washington.edu/exhibits/atype/statue.html)

16) "Joseph Anthony McDonnell".
Zoominfo.com. 19 Oct. 2011. Web. 3 Dec.
2012. [http://www.zoominfo.com/#!/search/
profile/person?
personId=67616875&targetid=profile](http://www.zoominfo.com/#!/search/profile/person?personId=67616875&targetid=profile)

17) [http://books.google.com/books?
id=75xJutvhQHcC&pg=PA62&lpg=PA62&
dq=winsor+ceiling+jackie
+winsor&source=bl&ots=sQvIgTW3J9&sig
=_lWZXaJUhf39S8w5isJJhNf3rM&hl=en
&sa=X&ei=-
XO5ULi2HOiDiwK4wIGABQ&ved=0CC
4Q6AEwAA#v=onepage&q=winsor
%20ceiling%20jackie%20winsor&f=false](http://books.google.com/books?id=75xJutvhQHcC&pg=PA62&lpg=PA62&dq=winsor+ceiling+jackie+winsor&source=bl&ots=sQvIgTW3J9&sig=_lWZXaJUhf39S8w5isJJhNf3rM&hl=en&sa=X&ei=-XO5ULi2HOiDiwK4wIGABQ&ved=0CC4Q6AEwAA#v=onepage&q=winsor%20ceiling%20jackie%20winsor&f=false)

18) [http://www.cs.washington.edu/building/
art/ErwinRedl/](http://www.cs.washington.edu/building/art/ErwinRedl/)

19)http://www.historylink.org/index.cfm?DisplayPage=output.cfm&file_id=8849

20)A&S Perspectives. "A Very Public Art Gallery: The UW Campus." College of Arts and Sciences: University of Washington. N.p., 2001. Web. 11 Dec. 2012. <<http://www.artsci.washington.edu/news/WinterSpring01/UWCampusPublicArt.htm>>.

21)Hines, Sandra. "Fisheries Lands a Ray Troll- with Slideshow." University of Washington. N.p., 12 Dec. 2011. Web. 11 Dec. 2012. <<http://www.washington.edu/news/2011/12/12/fisheries-lands-a-ray-troll-with-slideshow/>>.

22)Hines, Sandra. "Fisheries Lands a Ray Troll- with Slideshow." University of Washington. N.p., 12 Dec. 2011. Web. 11 Dec. 2012. <<http://www.washington.edu/news/2011/12/12/fisheries-lands-a-ray-troll-with-slideshow/>>.

23)Hines, Sandra. "Fisheries Lands a Ray Troll- with Slideshow." University of Washington. N.p., 12 Dec. 2011. Web. 11 Dec. 2012. <<http://www.washington.edu/news/2011/12/12/fisheries-lands-a-ray-troll-with-slideshow/>>.

25)Hines, Sandra. "Fisheries Lands a Ray Troll- with Slideshow." University of Washington. N.p., 12 Dec. 2011. Web. 11 Dec. 2012. <<http://www.washington.edu/news/2011/12/12/fisheries-lands-a-ray-troll-with-slideshow/>>.

26)Hines, Sandra. "Fisheries Lands a Ray Troll- with Slideshow." University of Washington. N.p., 12 Dec. 2011. Web. 11 Dec. 2012. <<http://www.washington.edu/news/2011/12/12/fisheries-lands-a-ray-troll-with-slideshow/>>.

27)Hines, Sandra. "Fisheries Lands a Ray Troll- with Slideshow." University of Washington. N.p., 12 Dec. 2011. Web. 11 Dec. 2012. <<http://www.washington.edu/news/2011/12/12/fisheries-lands-a-ray-troll-with-slideshow/>>.

29)Rupp, Christy. "Public Projects." Christy Rupp. N.p., 2008. Web. 11 Dec. 2012. <http://www.christyrupp.com/env_sculpt2.html>.

Map) University Of Washington. "UW Campus Art Collection." Map. University of Washington, 2007. 1-2. PDF.



